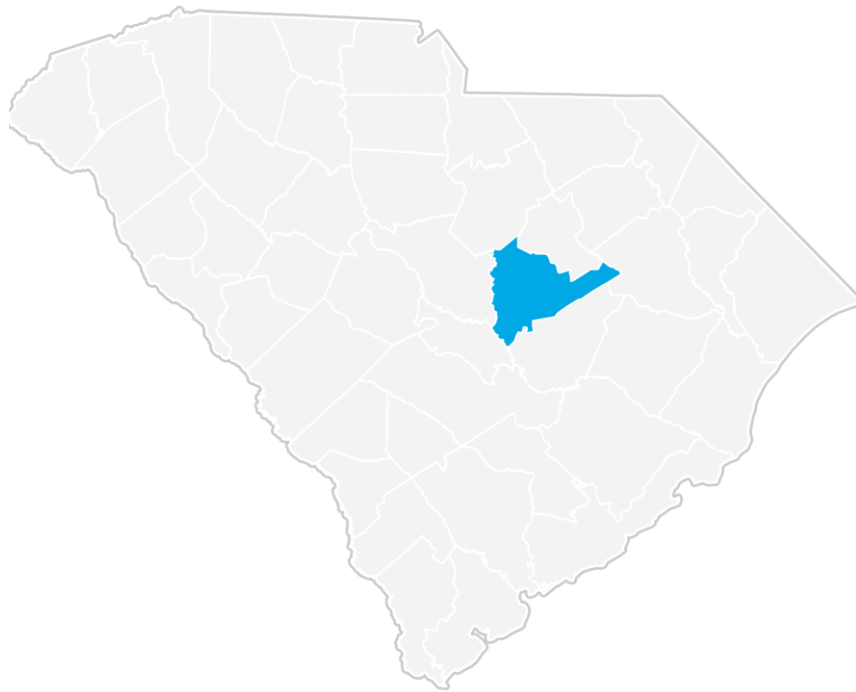




# **Economic Overview**

## **Sumter County, South Carolina**



<b>DEMOGRAPHIC PROFILE.....</b>	<b>3</b>
<b>EMPLOYMENT TRENDS.....</b>	<b>5</b>
<b>UNEMPLOYMENT RATE .....</b>	<b>5</b>
<b>WAGE TRENDS .....</b>	<b>6</b>
<b>COST OF LIVING INDEX .....</b>	<b>6</b>
<b>INDUSTRY SNAPSHOT.....</b>	<b>7</b>
<b>OCCUPATION SNAPSHOT .....</b>	<b>9</b>
<b>INDUSTRY CLUSTERS .....</b>	<b>11</b>
<b>EDUCATION LEVELS .....</b>	<b>11</b>
<b>FAQ .....</b>	<b>12</b>

# Demographic Profile

In 2015, the population in Sumter County, South Carolina was 107,480. Between 2005 and 2015, the region's population grew at an annual average rate of 0.1%.

The region has a civilian labor force of 47,927 with a participation rate of 57.1%. Of individuals 25 to 64 in Sumter County, South Carolina, 20.0% have a bachelor's degree or higher which compares with 31.3% in the nation.

The median household income in Sumter County, South Carolina is \$41,332 and the median house value is \$107,100.

Summary <sup>1</sup>						
	Percent			Value		
	Sumter County, South Carolina	South Carolina	USA	Sumter County, South Carolina	South Carolina	USA
<b>Demographics</b>						
Population <sup>2</sup>	—	—	—	107,480	4,896,146	321,418,820
Population Annual Average Growth <sup>2</sup>	0.1%	1.4%	0.8%	140	62,600	2,590,222
Median Age <sup>3</sup>	—	—	—	35.4	37.9	37.2
Under 18 Years	25.5%	23.4%	24.0%	27,431	1,080,474	74,181,467
18 to 24 Years	10.8%	10.3%	9.9%	11,579	476,445	30,672,088
25 to 34 Years	13.2%	12.8%	13.3%	14,198	592,056	41,063,948
35 to 44 Years	12.1%	13.0%	13.3%	12,996	601,292	41,070,606
45 to 54 Years	14.1%	14.3%	14.6%	15,188	659,428	45,006,716
55 to 64 Years	11.3%	12.6%	11.8%	12,143	583,795	36,482,729
65 to 74 Years	7.3%	8.0%	7.0%	7,883	369,043	21,713,429
75 Years, and Over	5.6%	5.7%	6.0%	6,038	262,831	18,554,555
Race: White	48.2%	66.2%	72.4%	51,825	3,060,000	223,553,265
Race: Black or African American	46.9%	27.9%	12.6%	50,414	1,290,684	38,929,319
Race: American Indian and Alaska Native	0.4%	0.4%	0.9%	389	19,524	2,932,248
Race: Asian	1.1%	1.3%	4.8%	1,188	59,051	14,674,252
Race: Native Hawaiian and Other Pacific Islander	0.1%	0.1%	0.2%	99	2,706	540,013
Race: Some Other Race	1.4%	2.5%	6.2%	1,511	113,464	19,107,368
Race: Two or More Races	1.9%	1.7%	2.9%	2,030	79,935	9,009,073
Hispanic or Latino (of any race)	3.3%	5.1%	16.3%	3,532	235,682	50,477,594
<b>Economic</b>						
Labor Force Participation Rate and Size (civilian population 16 years and over) <sup>4</sup>	57.1%	60.1%	63.3%	47,927	2,293,251	158,897,824
Armed Forces Labor Force <sup>4</sup>	2.8%	0.8%	0.4%	2,380	30,655	1,015,464
Veterans, Age 18-64 <sup>4</sup>	13.9%	7.4%	5.5%	8,825	216,199	10,750,884
Median Household Income <sup>3,4</sup>	—	—	—	\$41,332	\$45,483	\$53,889
Per Capita Income <sup>3,4</sup>	—	—	—	\$20,806	\$24,604	\$28,930

Summary <sup>1</sup>						
	Percent			Value		
	Sumter County, South Carolina	South Carolina	USA	Sumter County, South Carolina	South Carolina	USA
Poverty Level (of all people) <sup>4</sup>	18.0%	17.9%	15.5%	18,943	830,901	47,749,043
Households Receiving Food Stamps <sup>4</sup>	19.7%	15.1%	13.2%	7,988	273,306	15,399,651
Mean Commute Time (minutes) <sup>4</sup>	—	—	—	22.2	23.9	25.9
Commute via Public Transportation <sup>4</sup>	0.3%	0.6%	5.1%	136	12,661	7,362,038
Union Membership <sup>5</sup>	3.7%	3.0%	11.1%	—	—	—
<b>Educational Attainment, Age 25-64</b>						
No High School Diploma <sup>4</sup>	14.4%	12.4%	11.8%	7,796	306,794	19,736,243
High School Graduate <sup>4</sup>	29.5%	29.1%	26.4%	15,987	722,745	43,982,863
Some College, No Degree <sup>4</sup>	25.5%	22.0%	21.7%	13,779	546,318	36,187,232
Associate's Degree <sup>4</sup>	10.5%	9.8%	8.8%	5,708	244,173	14,742,654
Bachelor's Degree <sup>4</sup>	12.5%	17.5%	19.9%	6,759	434,980	33,245,950
Postgraduate Degree <sup>4</sup>	7.6%	9.2%	11.4%	4,092	228,218	18,952,103
<b>Housing</b>						
Total Housing Units <sup>4</sup>	—	—	—	46,698	2,174,319	133,351,840
Median House Value (of owner-occupied units) <sup>3,4</sup>	—	—	—	\$107,100	\$139,900	\$178,600
Homeowner Vacancy <sup>4</sup>	2.3%	2.3%	1.9%	620	29,305	1,492,691
Rental Vacancy <sup>4</sup>	5.3%	10.8%	6.4%	796	70,261	2,949,366
Renter-Occupied Housing Units (% of Occupied Units) <sup>4</sup>	34.7%	31.4%	36.1%	14,086	570,096	42,214,214
Occupied Housing Units with No Vehicle Available (% of Occupied Units) <sup>4</sup>	8.5%	7.0%	9.1%	3,461	126,245	10,628,474
<b>Social</b>						
Enrolled in Grade 12 (% of total population) <sup>4</sup>	1.4%	1.3%	1.4%	1,513	64,266	4,451,334
Disconnected Youth <sup>4,6</sup>	3.7%	3.7%	3.0%	212	9,422	518,859
Children in Single Parent Families (% of all children) <sup>4</sup>	45.2%	41.5%	34.8%	11,239	421,756	24,408,909
Disabled, Age 18-64 <sup>4</sup>	18.0%	12.5%	10.3%	11,292	361,775	19,985,588
Disabled, Age 18-64, Labor Force Participation Rate and Size <sup>4</sup>	44.3%	35.5%	41.0%	5,007	128,490	8,185,456
Foreign Born <sup>4</sup>	3.5%	4.8%	13.2%	3,744	228,408	41,717,420
Speak English Less Than Very Well (population 5 yrs and over) <sup>4</sup>	1.8%	2.8%	8.6%	1,827	126,584	25,410,756

Source: [JobsEQ®](#)

1, Census 2010, unless noted otherwise

2, Census 2015, annual average growth rate since 2005

3, Median values for certain aggregate regions (such as MSAs) may be estimated as the weighted averages of the median values from the composing counties.

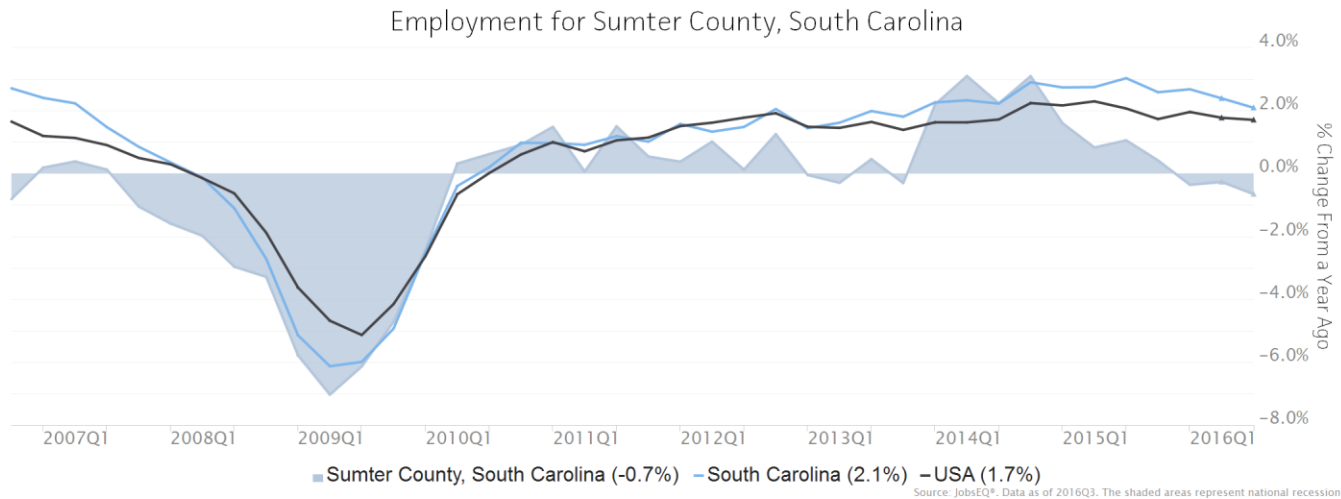
4, ACS 2011-2015

5, 2014; Current Population Survey, unionstats.com, and Chmura; county- and zip-level data are best estimates based upon industry-, MSA-, and state-level data

6, Disconnected Youth are 16-19 year olds who are (1) not in school, (2) not high school graduates, and (3) either unemployed or not in the labor force.

# Employment Trends

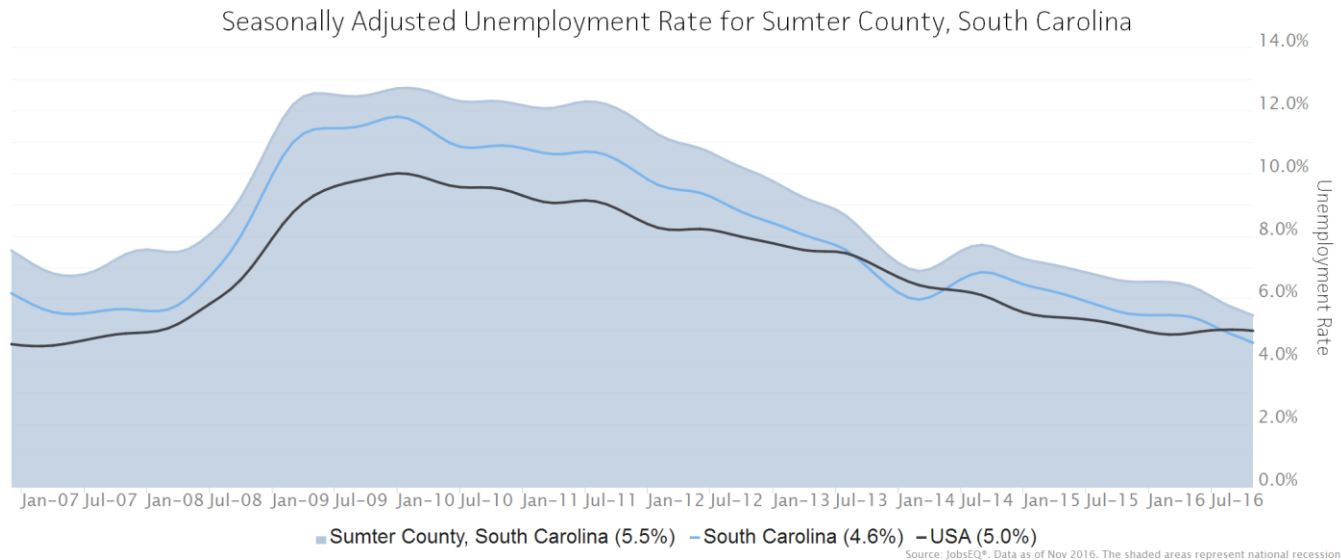
As of 2016Q3, total employment for Sumter County, South Carolina was 39,673 (based on a four-quarter moving average). Over the year ending 2016Q3, employment declined 0.7% in the region.



Employment data are derived from the Quarterly Census of Employment and Wages, provided by the Bureau of Labor Statistics and imputed where necessary. Data are updated through 2016Q1 with preliminary estimates updated to 2016Q3.

# Unemployment Rate

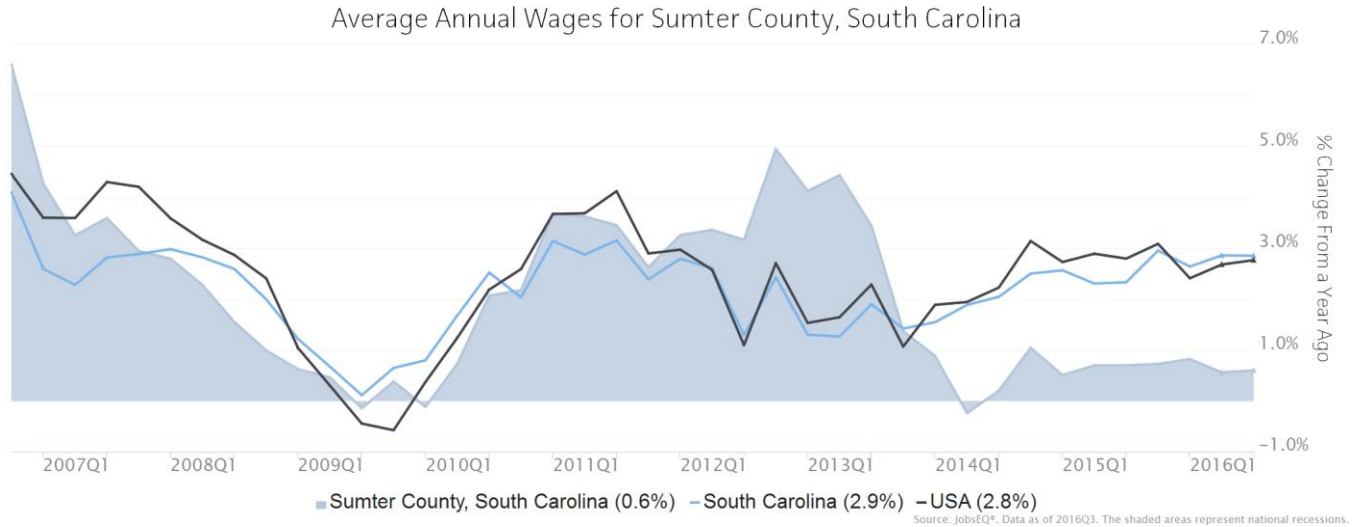
The seasonally adjusted unemployment rate for Sumter County, South Carolina was 5.5% as of November 2016. The regional unemployment rate was higher than the national rate of 5.0%. One year earlier, in November 2015, the unemployment rate in Sumter County, South Carolina was 6.5%.



Unemployment rate data are from the Local Area Unemployment Statistics, provided by the Bureau of Labor Statistics and updated through November 2016.

# Wage Trends

The average worker in Sumter County, South Carolina earned annual wages of \$34,635 as of 2016Q3. Average annual wages per worker increased 0.6% in the region during the preceding four quarters. For comparison purposes, annual average wages were \$52,724 in the nation as of 2016Q3.



Annual average wages per worker data are derived from the Quarterly Census of Employment and Wages, provided by the Bureau of Labor Statistics and imputed where necessary. Data are updated through 2016Q1 with preliminary estimates updated to 2016Q3.

# Cost of Living Index

The Cost of Living Index estimates the relative price levels for consumer goods and services. When applied to wages and salaries, the result is a measure of relative purchasing power. The cost of living is 13.6% lower in Sumter County, South Carolina than the U.S. average.

Cost of Living Information			
	Annual Average Salary	Cost of Living Index (Base US)	US Purchasing Power
Sumter County, South Carolina	\$35,286	86.4	\$40,850
South Carolina	\$42,648	95.3	\$44,743
USA	\$53,758	100.0	\$53,758

Source: [JobsEQ®](#)

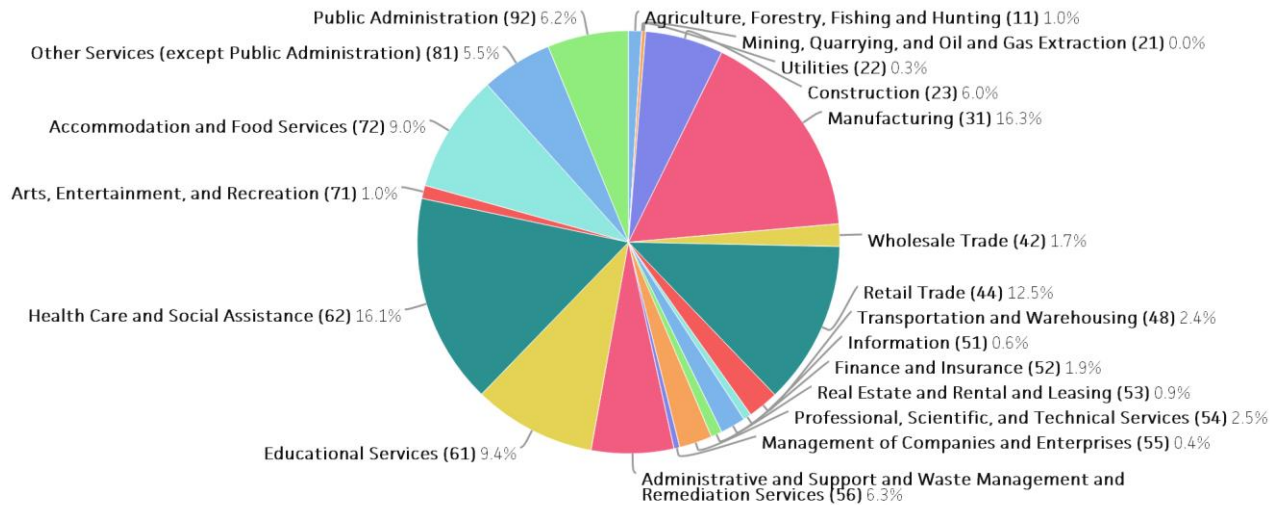
Data as of 2016Q3

The Cost of Living Index is developed by Chmura Economics & Analytics and is updated quarterly.

# Industry Snapshot

The largest sector in Sumter County, South Carolina is Manufacturing, employing 6,472 workers. The next-largest sectors in the region are Health Care and Social Assistance (6,388 workers) and Retail Trade (4,957). High location quotients (LQs) indicate sectors in which a region has high concentrations of employment compared to the national average. The sectors with the largest LQs in the region are Manufacturing (LQ = 1.97), Public Administration (1.30), and Other Services (except Public Administration) (1.23).

Total Workers for Sumter County, South Carolina by Industry



Source: JobsEQ®, Data as of 2016Q3

Employment data are derived from the Quarterly Census of Employment and Wages, provided by the Bureau of Labor Statistics and imputed where necessary. Data are updated through 2016Q1 with preliminary estimates updated to 2016Q3.

Sectors in Sumter County, South Carolina with the highest average wages per worker are Management of Companies and Enterprises (\$70,072), Utilities (\$56,660), and Professional, Scientific, and Technical Services (\$51,380). Regional sectors with the best job growth (or most moderate job losses) over the last 5 years are Accommodation and Food Services (+818 jobs), Health Care and Social Assistance (+710), and Manufacturing (+446).

Over the next 10 years, employment in Sumter County, South Carolina is projected to expand by 303 jobs. The fastest growing sector in the region is expected to be Construction with a +1.6% year-over-year rate of growth. The strongest forecast by number of jobs over this period is expected for Health Care and Social Assistance (+968 jobs), Construction (+406), and Educational Services (+82).

		Current			Historical				Forecast		
		Four Quarters Ending with 2016q3			Total Change over the Last 5 Years	Average Annual % Change in Employment 2011q3-2016q3			Over the Next 10 Years		
NAICS	Industry	Empl	Avg. Annual Wages	Location Quotient	Empl	Sumter County, South Carolina	South Carolina	USA	Total Approx Repl Demand	Total Growth Demand	Avg. Annual Growth Percent
11	Agriculture, Forestry, Fishing and Hunting	404	\$41,088	0.69	-142	-5.9%	-0.1%	1.3%	135	-40	-1.0%
22	Utilities	109	\$56,660	0.51	4	0.7%	0.5%	0.1%	26	-11	-1.1%
23	Construction	2,379	\$44,963	1.09	-158	-1.3%	2.6%	3.1%	501	406	1.6%
31	Manufacturing	6,472	\$44,379	1.97	446	1.4%	2.2%	1.1%	1,409	-799	-1.3%
42	Wholesale Trade	683	\$48,535	0.44	-111	-3.0%	2.2%	1.2%	151	6	0.1%
44	Retail Trade	4,957	\$24,666	1.15	434	1.9%	1.8%	1.5%	1,520	-53	-0.1%
48	Transportation and Warehousing	938	\$51,027	0.57	-146	-2.9%	4.2%	2.4%	234	-76	-0.8%
51	Information	243	\$40,707	0.30	-25	-2.0%	0.9%	0.7%	55	-31	-1.3%
52	Finance and Insurance	767	\$46,936	0.49	-29	-0.8%	0.7%	1.0%	179	-10	-0.1%
53	Real Estate and Rental and Leasing	341	\$33,694	0.51	9	0.5%	2.5%	1.8%	76	0	0.0%
54	Professional, Scientific, and Technical Services	998	\$51,380	0.38	-115	-2.2%	3.1%	2.6%	210	54	0.5%
55	Management of Companies and Enterprises	174	\$70,072	0.30	-13	-1.4%	2.9%	3.0%	36	-4	-0.2%
56	Administrative and Support and Waste Management and Remediation Services	2,499	\$24,204	0.97	190	1.6%	3.0%	2.9%	562	45	0.2%
61	Educational Services	3,726	\$33,489	1.14	39	0.2%	0.6%	0.4%	783	82	0.2%
62	Health Care and Social Assistance	6,388	\$36,169	1.14	710	2.4%	2.4%	2.3%	1,305	968	1.4%
71	Arts, Entertainment, and Recreation	393	\$14,806	0.50	24	1.2%	2.3%	2.3%	120	5	0.1%
72	Accommodation and Food Services	3,581	\$13,833	1.01	818	5.3%	3.2%	3.2%	1,242	-29	-0.1%
81	Other Services (except Public Administration)	2,163	\$22,423	1.23	22	0.2%	0.8%	0.0%	536	-35	-0.2%
92	Public Administration	2,456	\$44,953	1.30	-386	-2.9%	1.0%	-0.2%	572	-175	-0.7%
	Total - All Industries	39,673	\$34,635	1.00	1,569	0.8%	2.1%	1.7%	9,641	303	0.1%

Source: [JobsEQ®](#)

Employment data are derived from the Quarterly Census of Employment and Wages, provided by the Bureau of Labor Statistics and imputed where necessary. Data are updated through 2016Q1 with preliminary estimates updated to 2016Q3. Forecast employment growth uses national projections adapted for regional growth patterns.

# Occupation Snapshot

The largest major occupation group in Sumter County, South Carolina is Office and Administrative Support Occupations, employing 5,050 workers. The next-largest occupation groups in the region are Production Occupations (4,369 workers) and Sales and Related Occupations (3,802). High location quotients (LQs) indicate occupation groups in which a region has high concentrations of employment compared to the national average. The major groups with the largest LQs in the region are Production Occupations (LQ = 1.78), Community and Social Service Occupations (1.48), and Protective Service Occupations (1.28).

Occupation groups in Sumter County, South Carolina with the highest average wages per worker are Management Occupations (\$84,800), Healthcare Practitioners and Technical Occupations (\$69,000), and Legal Occupations (\$67,900). The unemployment rate in the region varied among the major groups from 2.1% among Legal Occupations to 10.2% among Transportation and Material Moving Occupations.

Over the next 10 years, the fastest growing occupation group in Sumter County, South Carolina is expected to be Healthcare Support Occupations with a +1.8% year-over-year rate of growth. The strongest forecast by number of jobs over this period is expected for Healthcare Practitioners and Technical Occupations (+254 jobs) and Healthcare Support Occupations (+229). Over the same period, the highest replacement demand (occupation demand due to retirements and workers moving from one occupation to another) is expected in Food Preparation and Serving Related Occupations (1,342 jobs) and Sales and Related Occupations (1,271).

Occupation Snapshot in Sumter County, South Carolina														
		Current					Historical				Forecast			
		Four Quarters Ending with 2016q3			2016q3		Total Change over the Last 5 Years	Avg Ann % Chg in Empl 2011q3-2016q3			Over the Next 10 Years			
SOC	Title	Empl	Avg. Annual Wages <sup>1</sup>	LQ	Unempl	Unempl Rate	Empl	Sumter County, South Carolina	South Carolina	USA	Current Online Job Ads <sup>2</sup>	Total Repl Demand	Total Growth Demand	Avg. Annual Growth Percent
11-0000	Management Occupations	2,055	\$84,800	0.86	59	2.8%	-69	-0.7%	1.7%	1.5%	61	668	-29	-0.1%
13-0000	Business and Financial Operations Occupations	1,324	\$62,600	0.68	67	4.7%	-66	-1.0%	2.0%	1.6%	42	287	-11	-0.1%
15-0000	Computer and Mathematical Occupations	559	\$56,900	0.51	29	4.6%	-29	-1.0%	3.1%	2.6%	119	84	22	0.4%
17-0000	Architecture and Engineering Occupations	610	\$64,800	0.92	16	2.7%	-21	-0.7%	2.1%	1.2%	32	155	-29	-0.5%
19-0000	Life, Physical, and Social Science Occupations	344	\$44,900	1.08	6	2.5%	69	4.6%	1.7%	1.2%	22	108	28	0.8%
21-0000	Community and Social Service Occupations	933	\$39,400	1.48	36	4.2%	118	2.8%	1.6%	1.6%	12	207	80	0.8%
23-0000	Legal Occupations	193	\$67,900	0.62	4	2.1%	-30	-2.9%	0.8%	0.3%	0	37	-3	-0.1%
25-0000	Education, Training, and Library Occupations	2,759	\$39,500	1.23	191	7.0%	-3	0.0%	0.6%	0.5%	40	597	79	0.3%
27-	Arts, Design,	387	\$38,600	0.56	21	5.3%	-8	-0.4%	1.6%	1.3%	10	134	-18	-0.5%

### Occupation Snapshot in Sumter County, South Carolina

		Current					Total Change over the Last 5 Years	Historical			Forecast			
		Four Quarters Ending with 2016q3			2016q3			Avg Ann % Chg in Empl 2011q3-2016q3	Over the Next 10 Years					
SOC	Title	Empl	Avg. Annual Wages <sup>1</sup>	LQ	Unempl	Unempl Rate			Empl	Sumter County, South Carolina	South Carolina	USA	Current Online Job Ads <sup>2</sup>	Total Repl Demand
0000	Entertainment, Sports, and Media Occupations													
29-0000	Healthcare Practitioners and Technical Occupations	2,246	\$69,000	1.00	59	2.5%	4	0.0%	1.9%	1.6%	153	500	254	1.1%
31-0000	Healthcare Support Occupations	1,185	\$23,900	1.02	85	6.8%	149	2.7%	2.5%	2.3%	30	262	229	1.8%
33-0000	Protective Service Occupations	984	\$26,400	1.28	55	5.0%	-96	-1.8%	1.7%	0.9%	28	210	-20	-0.2%
35-0000	Food Preparation and Serving Related Occupations	3,625	\$18,800	1.06	394	10.0%	729	4.6%	3.1%	3.0%	86	1,342	7	0.0%
37-0000	Building and Grounds Cleaning and Maintenance Occupations	1,724	\$21,800	1.20	134	7.5%	49	0.6%	1.6%	1.1%	20	379	1	0.0%
39-0000	Personal Care and Service Occupations	1,590	\$21,000	1.01	97	6.1%	119	1.6%	2.1%	2.2%	53	450	133	0.8%
41-0000	Sales and Related Occupations	3,802	\$31,700	0.92	295	7.4%	222	1.2%	2.0%	1.5%	256	1,271	-33	-0.1%
43-0000	Office and Administrative Support Occupations	5,050	\$30,600	0.85	349	6.3%	184	0.7%	2.2%	1.7%	119	1,079	-149	-0.3%
45-0000	Farming, Fishing, and Forestry Occupations	157	\$24,100	0.61	15	8.0%	-62	-6.5%	0.3%	1.8%	2	62	-17	-1.1%
47-0000	Construction and Extraction Occupations	1,650	\$38,100	0.93	135	7.4%	-123	-1.4%	2.2%	2.4%	16	320	182	1.1%
49-0000	Installation, Maintenance, and Repair Occupations	1,672	\$36,200	1.10	91	5.3%	98	1.2%	2.0%	1.7%	83	437	110	0.6%
51-0000	Production Occupations	4,369	\$33,800	1.78	364	8.2%	324	1.6%	2.2%	1.5%	54	1,106	-466	-1.1%
53-0000	Transportation and Material Moving Occupations	2,455	\$29,300	0.92	269	10.2%	8	0.1%	3.0%	2.2%	84	610	-63	-0.3%
00-0000	Total - All Occupations	39,673	\$37,500	1.00	n/a	n/a	1,569	0.8%	2.1%	1.7%	1,322	10,304	288	0.1%

Source: [JobsEQ®](http://www.chmuraecon.com/jobseq)

Data as of 2016Q3 unless noted otherwise

Note: Figures may not sum due to rounding.

1. Occupation wages are as of 2015 and should be taken as the average for all Covered Employment

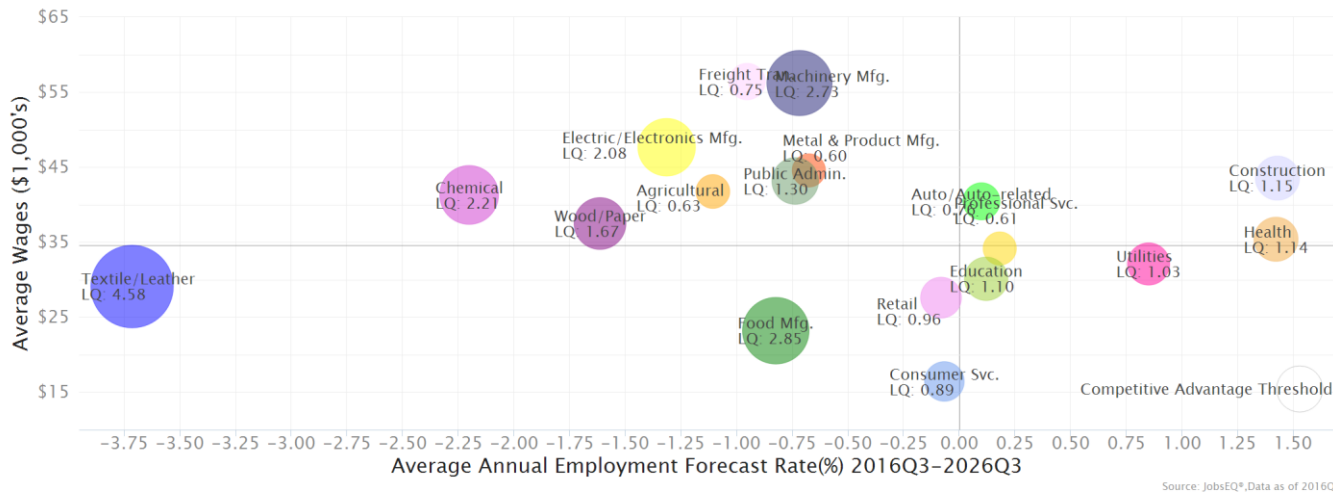
2. Data represent found online ads active within the last thirty days in any zip code intersecting or within the selected region; data represents a sampling rather than the complete universe of postings.

Occupation employment data are estimated via industry employment data and the estimated industry/occupation mix. Industry employment data are derived from the Quarterly Census of Employment and Wages, provided by the Bureau of Labor Statistics and currently updated through 2016Q1, imputed where necessary with preliminary estimates updated to 2016Q3. Wages by occupation are as of 2015 provided by the BLS and imputed where necessary. Forecast employment growth uses national projections from the Bureau of Labor Statistics adapted for regional growth patterns.

# Industry Clusters

A cluster is a geographic concentration of interrelated industries or occupations. The industry cluster in Sumter County, South Carolina with the highest relative concentration is Textile/Leather with a location quotient of 4.58. This cluster employs 504 workers in the region with an average wage of \$29,088. Employment in the Textile/Leather cluster is projected to contract in the region about 3.7% per year over the next ten years.

Industry Clusters for Sumter County, South Carolina as of 2016Q3



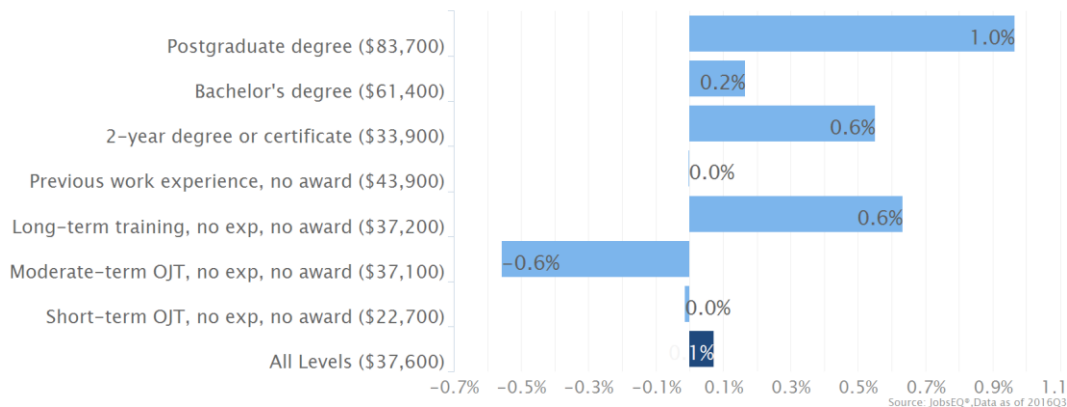
Source: JobsEQ®, Data as of 2016Q3

Location quotient and average wage data are derived from the Quarterly Census of Employment and Wages, provided by the Bureau of Labor Statistics, imputed where necessary, and updated through 2016Q1 with preliminary estimates updated to 2016Q3. Forecast employment growth uses national projections from the Bureau of Labor Statistics adapted for regional growth patterns.

# Education Levels

Expected growth rates for occupations vary by the education and training required. While all employment in Sumter County, South Carolina is projected to grow 0.1% over the next ten years, occupations typically requiring a postgraduate degree are expected to grow 1.0% per year, those requiring a bachelor's degree are forecast to grow 0.2% per year, those requiring a bachelor's degree are forecast to grow 0.2% per year, and occupations typically needing a 2-year degree or certificate are expected to grow 0.6% per year.

Annual Average Projected Job Growth by Training Required for Sumter County, South Carolina



Source: JobsEQ®, Data as of 2016Q3

Employment by occupation data are estimates as of 2016Q3. Education levels of occupations are based on BLS assignments. Forecast employment growth uses national projections from the Bureau of Labor Statistics adapted for regional growth patterns.

# FAQ

## What is a location quotient?

A location quotient (LQ) is a measurement of concentration in comparison to the nation. An LQ of 1.00 indicates a region has the same concentration of an industry (or occupation) as the nation. An LQ of 2.00 would mean the region has twice the expected employment compared to the nation and an LQ of 0.50 would mean the region has half the expected employment in comparison to the nation.

## What is replacement demand?

Replacement demand is the number of jobs required due to replacements—retirements and turnover resulting from workers moving from one occupation into another. Note that replacement demand does not include all turnover—it does not include when workers stay in the same occupation but switch employers. The replacement demand shown in this report may also be understated; thus, it can be taken to be a minimum measure of the number of workers who will need to be trained for the occupation due to replacements. The total projected demand for an occupation is the sum of the replacement demand and the growth demand (which is the increase or decrease of jobs in an occupation expected due to expansion or contraction of the overall number of jobs in that occupation).

## What is a cluster?

A cluster is a geographic concentration of interrelated industries or occupations. If a regional cluster has a location quotient of 1.25 or greater, the region is considered to possess a *competitive advantage* in that cluster.

## What is the difference between industry wages and occupation wages?

Industry wages and occupation wages are estimated via separate data sets, often the time periods being reported do not align, and wages are defined slightly differently in the two systems (for example, certain bonuses are included in the industry wages but not the occupation wages). It is therefore common that estimates of the average industry wages and average occupation wages in a region do not match exactly.

## What is NAICS?

The North American Industry Classification System (NAICS) is used to classify business establishments according to the type of economic activity. The NAICS Code comprises six levels, from the “all industry” level to the 6-digit level. The first two digits define the top level category, known as the “sector,” which is the level examined in this report.

## What is SOC?

The Standard Occupational Classification system (SOC) is used to classify workers into occupational categories. All workers are classified into one of over 820 occupations according to their occupational definition. To facilitate classification, occupations are combined to form 23 major groups, 96 minor groups, and 449 occupation groups. Each occupation group includes detailed occupations requiring similar job duties, skills, education, or experience.

## About This Report

This report and all data herein were produced by JobsEQ®, a product of Chmura Economics & Analytics. The information contained herein was obtained from sources we believe to be reliable. However, we cannot guarantee its accuracy and completeness.